



WARNING:

CHOKING HAZARD—Small parts.
Not for children under 4 years.

32663

AGES
4+

Lite-Brite®

Four-Share Cube™

Includes: Four-Share Cube™ playset (5 pieces), 300 pegs, 8 pattern sheets and 4 blank sheets.

Picture Refill Sets available at www.LiteBrite.com.

(Each sold separately.)



x3

1.5V AA

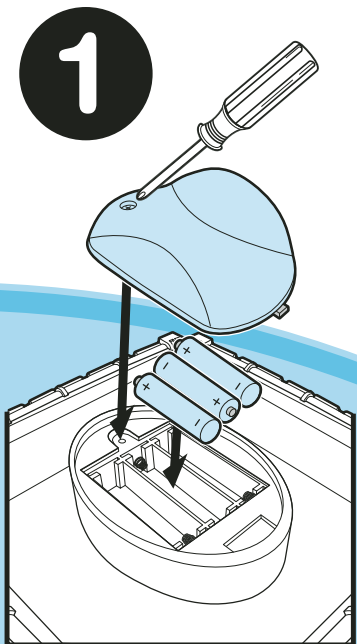
R6 size

**BATTERIES
REQUIRED
NOT INCLUDED**

Alkaline batteries
recommended.
Phillips/cross head
screwdriver
(not included)
needed to insert
batteries.



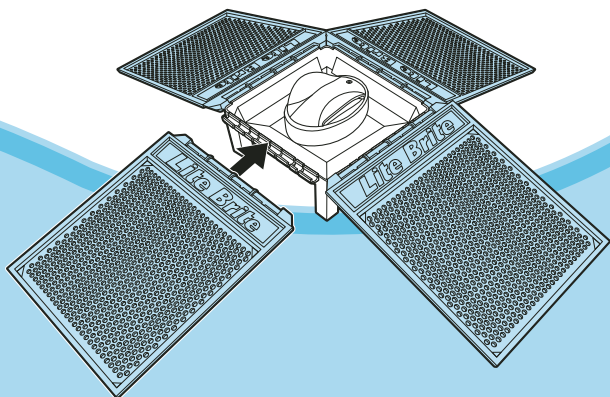
TO ASSEMBLE:



Using Phillips/cross head screwdriver (not included), loosen screws in battery compartment cover (screw remains attached to cover). Remove cover. Insert 3 x 1.5V "AA" or R6 size batteries. Alkaline batteries recommended. Replace cover and tighten screws.

2

With the LITE-BRITE logo facing up, snap all 4 cube sides onto the base by connecting them to the hinges as shown. Store pegs in the cube base tray as shown.



IMPORTANT: BATTERY INFORMATION

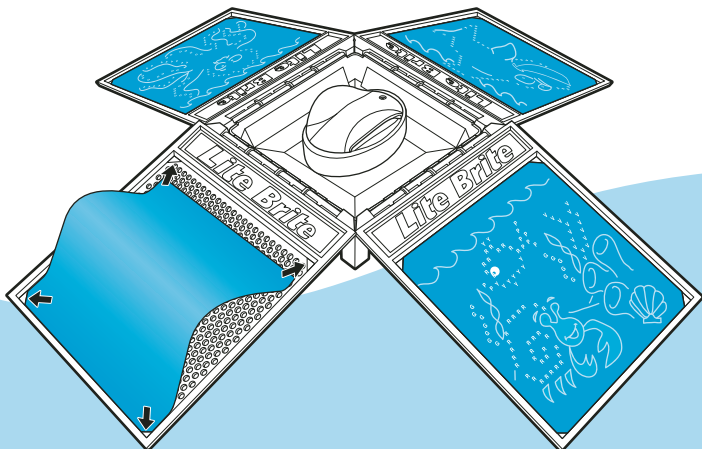
⚠ CAUTION:

1. Always follow the instructions carefully. Use only batteries specified and be sure to insert them correctly by matching the + and – polarity markings.
2. Do not mix old batteries and new batteries or standard (carbon-zinc) with alkaline batteries.
3. Remove exhausted or dead batteries from the product.
4. Remove batteries if product is not to be played with for a long time.
5. Do not short-circuit the supply terminals.
6. Should this product cause, or be affected by, local electrical interference, move it away from other electrical equipment. Reset (switching off and back on again or removing and re-inserting batteries) if necessary.
7. RECHARGEABLE BATTERIES: Do not mix these with any other types of batteries. Always remove from the product before recharging. Recharge batteries under adult supervision. **DO NOT RECHARGE OTHER TYPES OF BATTERIES.**



TO PLAY:

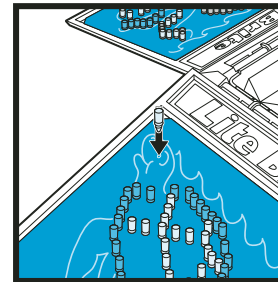
- 1** Tear the pattern sheets along the perforated lines and remove.
- 2** Place a pattern sheet flat and straight against one of the four peg screens. Insert sheet corners into the screen holders as shown to make sure the sheet stays in position.



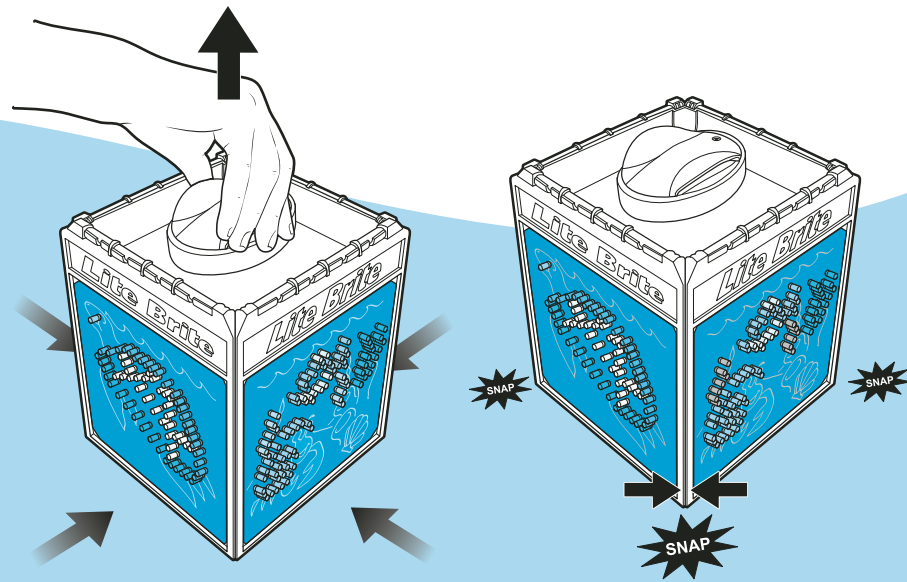
- 3** To create a picture, follow the printed letters on the sheet to tell which colored pegs to use. (see chart below).

O = ORANGE	R = RED	G = GREEN	P = PINK
W = WHITE	B = BLUE	Y = YELLOW	V = VIOLET

- 4** Insert the colored pegs through the paper and into the peg screen as far as they will go.

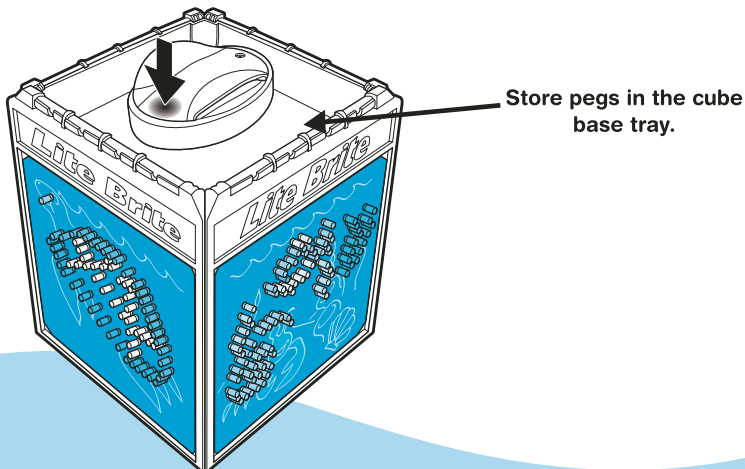


- 5** When you are finished pegging, lift the cube base up and fold the sides down. Snap the side corners together to stand.



6

Press the center button to illuminate your pictures!
Press the button a second time to make your creation blink.
Press the button a third time to turn the toy off.



FCC STATEMENT

This device complies with Part 15 of the FCC Rules. Operation is subject to the following two conditions: (1) This device may not cause harmful interference, and (2) this device must accept any interference received, including interference that may cause undesired operation.

NOTE: This equipment has been tested and found to comply with the limits for a Class B digital device, pursuant to Part 15 of the FCC Rules. These limits are designed to provide reasonable protection against harmful interference in a residential installation. This equipment generates, uses and can radiate radio frequency energy, and, if not installed and used in accordance with the instructions, may cause harmful interference to radio communications. However, there is no guarantee that interference will not occur in a particular installation. If this equipment does cause harmful interference to radio or television reception, which can be determined by turning the equipment off and on, the user is encouraged to try to correct the interference by one or more of the following measures:

- Reorient or relocate the receiving antenna.
- Increase the separation between the equipment and receiver.
- Consult the dealer or an experienced radio/TV technician for help.

CAUTION: Changes or modifications to this unit not expressly approved by the party responsible for compliance could void the user's authority to operate the equipment.

PN 7155860000

LITEBRITE.COM Questions? Call: 1-800-327-8264. Product and colors may vary.

© 2011 Hasbro. All Rights Reserved. TM and © denote U.S. Trademarks.

